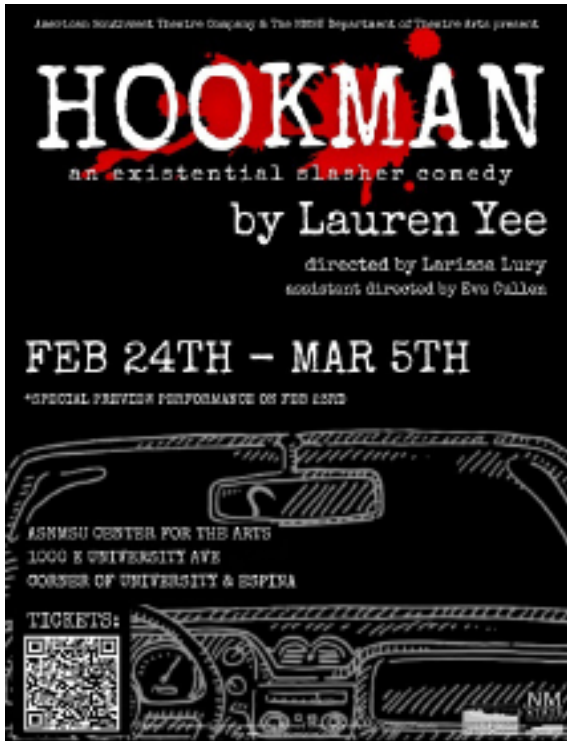
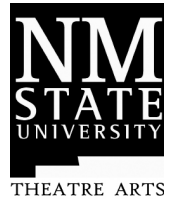




American Southwest Theatre Company
at NMSU Theatre Arts
presents



Director
Scenic Designer
Costume Designer
Lighting Designer
Projection Designer
Props Designer
Sound Designer
Stage Manager

Larissa Lury
Hsi-An Chen
Chloe Cappuccilli
Alia Belente
Hsi-An Chen
Vance Cook
Jim Wilkinson
Casey Standridge

HOOKMAN is presented by arrangement with Concord Theatricals on behalf of Samuel French, Inc. www.concordtheatrical.com

CAST

LEXI -- Eliza Phillips

JESS -- Liliana Tuda

YOONJI -- Tiara Sibley

CHLOE -- Joshua Jackson

KAYLEIGH -- Angelique Reagan

HOOKMAN/SEAN/ADAM -
Benjamin Ramsey

Understudy; JESS & CHLOE -- Alycia Herrera

Understudy; LEXI -- Emma Kenney

Understudy; KAYLEIGH -- Indira Rucker

Understudy: HOOKMAN/SEAN/ADAM --
Austin Reeve

TIME / PLACE

1. In the car / the Friday of Thanksgiving break
2. University of Connecticut
3. West Porter High

Audiences are reminded to please silence all electronic devices (cell phones and alarms) prior to the performance.

Thank you for your consideration.

CAST BIOGRAPHIES

Joshua Jackson (Chloe) You may have seen Joshua as cross-dressing, madcap seducing scientist Dr. Frank-N-Furter in *The Rocky Horror Picture Show*. Other favorite roles include Leaf in *The 25th Annual Putnam County Spelling Bee*, Romeo in *The Shakespeare Project*. She/They is a senior at New Mexico State University majoring in Theatre Arts. With *Hookman* being her last show, she would like to say thank you to all the wonderful faculty and students who been in support through her overall journey here at NMSU.

Eliza Phillips (Lexi) Eliza is a sophomore here at NMSU. Eliza has been involved with theatre since the 5th grade. She has previously performed in shows here at NMSU, portraying Cecilia in *Fefu, and her Friends*, and various characters in *The Complete Works of William Shakespeare (abridged) {revised}* with Ember Theatre Co. here on campus. Eliza would like to thank her cast and crew members since with their collaboration and hard work this production could happen.

Benjamin Ramsey (Hookman/Sean/Adam) Ben is a junior at New Mexico State University, pursuing a double-major in History and Theatre Arts. This is his fifth show that he has acted in with the school and his seventh show in Las Cruces. *Hookman* presents some of the most challenging material that he has ever attempted but also the most exciting. He hopes the audience can learn as much from the show as he has.

Angelique Reagan (Kayleigh) Angelique is a transfer student in her third year, this being her first year at NMSU in the theatre department. This is her second performance at NMSU after *A Christmas Carol* last semester. She's done previous performances and shows in high school at NMSA like *Fiddler on the Roof* and *Princess and a Pea*. She's excited to be a part of this community, and praises God for all of these amazing opportunities.

Liliana Tuda (Jess) Liliana is a senior at NMSU in the Theater Arts Department and previous graduate of NMSU's Creative Media Institute in the Animation Department. This will be her first performance after joining the Theater Department. Liliana is extremely excited to be working on and off stage with her classmates and teachers. The staff and students in this cast have supported her every second and she feels incredibly thankful to them for helping her every step of the way.

CAST BIOGRAPHIES

Tiara Sibley (Yoonji) Tiara is a freshman at NMSU in the Agriculture, Consumer, and Environmental Sciences Department. This will be her very first performance in the theatre space. Tiara is excited to play the part of Yoonji and is greatly appreciative to be representing an East-Asian character in this production. She loves her cast members and the environment she gets to come to after a long day, the theatre space is her newfound happy space.

UNDERSTUDY BIOGRAPHIES

Alycia Herrera (u/s Jess & Chloe) Alycia is a senior at NMSU, majoring in Theatre Arts. This is her third show with the NMSU theatre program. She recently got to originate the role Maya Rubio in the new play *Big Frog* by Dylan Guerra. She also was Thespian president of Troupe 2996 in high school. She uses her acting to draw closer to the Lord, and she desires that through her work she might worship and praise Jesus for all He has done and is doing in her life. She'd like to thank her family for being proud of her and always being so eager to watch her on stage, no matter what role she plays.

Emma Kenney (u/s Lexi) Emma is a junior at New Mexico State, and this will be her second performance with NMSU. She has been doing community theatre since she was a kid, and that continued through high school up until now. Several of her previous productions include *The Wicked Witch of the West* in *The Wizard of Oz*, Ronette in *Little Shop of Horrors*, and Mercutio in *Romeo and Juliet*. Emma is so glad to be a part of this production and hopefully many other NMSU productions to come!

Indira Rucker (u/s Kayleigh) Indira is a freshman at NMSU in the Theatre Arts Department. This is their first performance since playing Orin Scrivello in *Little Shop of Horrors*. They're extremely thankful for *Hookman* and the cast and crew for creating a space for them to happily and comfortably re-enter the theatre space. Indira is excited to be back on stage and pursuing their acting career.

Austin Reeve (u/s Hookman, Sean & Adam) Austin is a junior at NMSU and this is his second show here. You may have seen him try to convince his uncle to come to Christmas dinner in *A Christmas Carol* in his role Fred or try to steal the one ring in *The Hobbit* in Thibert hall. You may have also seen him play Everybody in a show by the same name. He is excited to be a part of the theatre and a part of this show! He also loves running Ember Theatre Company and hopes everyone here enjoys the show!

DIRECTORS NOTES

I usually see directors' notes as a chance to give a window into the play, or to give some sense of my personal entry point. This time, I know that if I say too much, I'll ruin the fun of the ride.

This time, I wish I could hang out with you all after the show as you put the pieces together, unravel all the layers, and find more and more and more.

I hope you'll join us for the post-show discussions we have planned on 2/26 and 3/4, and that you feel free to reach out to me with your thoughts as you unpack it.

I am grateful for the ensemble of students involved in this production, and the way they have supported one another throughout this process. Without that, the real stuff this play gets at would have been impossible to dig into, and the style crucial to the way it's delivered would have fallen flat. Keeping each other "safe" made the danger the play enters into possible.

I'm also excited to bring Lauren Yee's work to Las Cruces. She is one of the most produced living playwrights in the country for good reason, and has helped to make major strides in increasing Asian American representation on stages around the country, but we haven't seen enough of her work yet here in town.

Thanks for being here, thanks for taking a chance on a play, even if you weren't sure what you were getting yourself into.

Seatbelts on. Here we go.

Wishing you the fun of the ride in the theatre, and safety on the ride home while you keep putting the pieces together.

-- Larissa Lury

FROM THE DEPARTMENT HEAD AND MANAGING DIRECTOR

Welcome to our first production of the spring semester, *Hookman*. We are always appreciative of your support, and the students are always thrilled to have a responsive audience viewing their hard work.



We hope you enjoy our varied types and styles of plays, as we work to ensure that students have diverse experiences while in theatre arts at NMSU, and we bring you both the classics and shows you may never have heard of before. We hope you may discover a new favorite.

Please be sure to join us for our final production of the spring semester, the iconic musical, *Godspell*. I have the honor of directing that musical, and there will be just a bit of a twist to make the ancient gospels even more relatable to current events. Come witness our talented student singers and perhaps there will be just a bit of tap dancing thrown-in, along with favorite songs such as Day by Day.

We always welcome your feedback, so if you have show ideas or any other suggestions, please catch one of us after the show, or send a message: wkilroy@nmsu.edu. We love hearing from you.

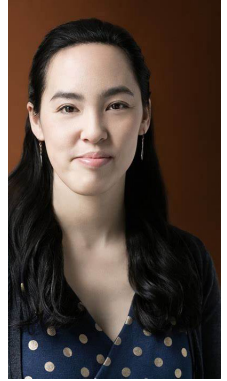
This Spring at ASTC at NMSU

Godspell (2012 Revised Version)
Music & Lyrics by Stephen Schwartz
April & May, 2023

About the Playwright

Lauren Yee is a playwright, screenwriter, and TV writer born and raised in San Francisco. She currently lives in New York City.

Her CAMBODIAN ROCK BAND, with music by Dengue Fever and others, premiered at South Coast Rep, with subsequent productions at Oregon Shakespeare Festival, La Jolla Playhouse, Victory Gardens, City Theatre, Merrimack Rep, and Signature Theatre.



Her play THE GREAT LEAP has been produced at Denver Center, Seattle Rep, Atlantic Theatre, Guthrie Theatre, American Conservatory Theatre, Arts Club, InterAct Theatre, Steppenwolf, Pasadena Playhouse/East West Players, and Cynet Theatre.

Other plays include CHING CHONG CHINAMAN (Pan Asian Rep, Mu Performing Arts), THE HATMAKER'S WIFE (Playwrights Realm, Moxie, PlayPenn), KING OF THE YEES (The Goodman Theatre and Center Theatre Group), IN A WORD (Young Vic, SF Playhouse, Cleveland Public, Strawdog), SAMSARA (Victory Gardens), THE SONG OF SUMMER (Trinity Rep, Mixed Blood), and THE TIGER AMONG US (Mu).

She is the winner of the Doris Duke Artist Award, the Steinberg Playwright Award, the Horton Foote Prize, the Kesselring Prize, the ATCA/Steinberg Award, American Academy of Arts and Letters literature award, and the Francesca Primus Prize. She has been a finalist for the Edward M. Kennedy Prize and the Susan Smith Blackburn Prize. Her plays were the #1 and #2 plays on the 2017 Kilroys List.

Lauren is a Residency 5 playwright at Signature Theatre, New Dramatists member (class of 2025), Ma-Yi Writers' Lab member, former Princeton University Hodder fellow, and Playwrights Realm alumni playwright. Current commissions include Arena Stage, Geffen Playhouse, La Jolla Playhouse, Portland Center Stage, Second Stage, South Coast Rep.

She has been a writer on PACHINKO (Apple TV+), SOUNDTRACK (Netflix), and a soon-to-be announced upcoming FX limited series. She is executive producing the adaptation of Anthony Veasna So's AFTERPARTIES for television. She is currently developing new work for Apple TV+ and Netflix.

GUEST ARTIST BIOGRAPHY

Hsi-An Chen (Scenic & Projection Designer)

Hsi-An is a set and graphic designer based in San Diego, California. Originally from Taipei, Taiwan. She received her BA in Drama and Theater from National Taiwan University. She came to the United States in 2017 for the graduate scenic design program at UC San Diego with a full scholarship and got her MFA in 2020. Her recent set design credit includes *Play by Young Writers* (Playwrite Project), *Drowning Girls* (OnStage Playhouse), and *IYA: The Ex'celen Remember* (UC San Diego Ethnic Studies). Her graphic design work focuses on brand identity for theater companies.

ASSISTANT DIRECTORS NOTES

I would like to first start off by expressing how grateful I am to Larissa for trusting me and giving me the opportunity to assist her with this production. I have learned so much from her and will continue to use what I have learned in this experience as I work towards my career in directing in the future.

With that said, being a part of this production has been so fulfilling. There are so many emotions and stories within this show that I can relate to as an 18 year-old college student and being able to see characters go through similar situations that I have, has been such a freeing and powerful experience. I hope you can find parts of yourself that can also relate to the characters whether you've lost a friend, felt that you were unheard, or you have inner demons you're trying to heal. This show forces us to look at the scary parts of ourselves and learn how to live with them.

After leaving this show, I hope you all feel as fulfilled as I am with my experience working with this incredible cast and crew and hope you can gain the courage to confront your own "Hookman" within your own lives.

-- Eva Cullen

Student Production Biographies

Alia Belinte (Lighting Designer) Alia's most recent lighting design credits include *American Idiot* with Blank Conversations Theatre Co. and *Big Frog* by Dylan Gurrera. This production will be Alia's fourth NMSU production as lighting designer. This semester Alia will complete her undergraduate degree in Theatre Arts.

Vance Cook (Properties Designer) Vance is a sophomore at NMSU and is excited to showcase his design capabilities in *Hookman*. His previous credits include Props Design for *The Yellow Wallpaper* (ETC/BCTC) and Set Design for *Meteor Shower* (BCTC). He would like to thank his partner for support and his father for telling him "to always shoot up towards the stars." L'chaim!!

Eva Cullen (Assistant Director) Eva is a sophomore here at New Mexico State University studying Theatre Arts and minoring in Secondary Education. Making a name for herself directing shows within the community such as *The Yellow Wallpaper* with Ember Theatre Company and Blank Conversations, she is beyond excited to be assisting Larissa in a professional show at the university. She has already learned so much and can't wait for future directing opportunities within the department.

Esther Rogge (Movement Co-Director) Esther (they/them/theirs) is a local artist studying musical theater and psychology at New Mexico State University. This is Esther's sixth production at NMSU. They've been studying dance for 16 years and theater for 9 years, making the performing arts their longest running passion.

Casey Standridge (Stage Manager) Casey is a senior and Musical Theatre Major at NMSU. This is her second production with the department and her first experience stage managing. Casey has been involved in theater since 7th grade and is excited to continue to make a name for herself here at NMSU. She thanks her family and partner for their support and the *Hookman* team for creating a supportive space for her to learn and grow.

Reagan Szulc (Assistant Stage Manager) Reagan is a senior at NMSU studying Theatre Arts. She is most often acting onstage and some of her recent credits include Mary in *The Yellow Wallpaper* and Lina Lamont in *Singin' in the Rain*. She is excited to be a part of the production side of *Hookman*.

Camren Vugteveen (Assistant Props Designer) Camren is a freshman this year and was happy to be the assistant props designer for this show. He cannot wait to assist in future productions with NMSU, whether that be on stage or anywhere he can be thrown into. Beware the HOOKMAN! And enjoy the show!

PRODUCTION STAFF

Theatre Manager	Jim Wilkinson
Interim Technical Director	Dave Hereford
Production Stage Manager	Mike Wise
Costume Shop Manager	Tamara M. Carruthers
Master Electrician	Jim Wilkinson
Scenic Artist/Painter	Bob Diven
Assistant Director	Eva Cullen
Movement Co-Director	Esther Rogge
Original Music Composed by	Peyton Womble
Assistant Stage Manager	Reagan Szulc
Assistant Props Designer	Camren Vugteveen
Light Board Operator	Darcy Harman
Sound Board Operator	JJ Hanley
Projectionist	Sydney Lopez
Stage Crew	Aslan Chavez, Athena McPeake, Mario Monteil, Dominick Zimmerman
Set Construction	THTR 141L & THTR 346 students
Costume Construction	THEA 1310L & THEA 345 students
Wardrobe Supervisor	Mattie Ruminer
Costume Crew	Sadie Cavlin, Omar Moreno, Austin Reeve, and Angelique Reagan
House Manager	Shawn Pirkle
House Crew	Aureth Belmont Sanchez, Arleth Lopez, Peyton Womble
Photographers	Mike Wise, and Ryan Mixon

THE VIDEOTAPING OR MAKING OF ELECTRONIC OR OTHER AUDIO AND/OR VISUAL RECORDINGS OF THIS PRODUCTION AND DISTRIBUTING RECORDINGS OR STREAMS IN ANY MEDIUM, INCLUDING THE INTERNET, IS STRICTLY PROHIBITED, A VIOLATION OF THE AUTHORS' RIGHTS AND ACTIONABLE UNDER UNITED STATES COPYRIGHT LAW. FOR MORE INFORMATION, PLEASE VISIT: <https://concordtheatrical.com/resources/protecting-artists>.

RESIDENT COMPANY BIOGRAPHIES

Chloe Cappuccilli is a Visiting Assistant Professor at NMSU working as a costume designer. She received her B.F.A from Columbia College Chicago in 2015 and her M.F.A from West Virginia University in 2020. She has worked as a costume and puppet designer, as well as costume crafts artisan and draper. Costume design credits include: *The Phantom Tollbooth*, *Naga Mandala* (West Virginia University) *Half Life of Memory* (Cold Basement Dramatics) *Moon shot*, *The American Revolution* (Theatre Unspeakable) *The Tempest*, *True West*, *Human Rites* (Columbia College Chicago).

Tamara M. Carruthers received a Bachelor of Arts in Theatre Arts from New Mexico State University. She managed NMSU's Costume Shop for three semesters directly after graduation. She then joined Wayside Theatre (Middletown, VA) and spent ten years as their Resident Costume Designer and Shop Manager. She spent five summers in the Costume Shop at Creede Repertory Theatre (Creede, CO) designing and serving as their Draper, Draper/First Hand, Assistant Costume Shop Manager, and Costume Shop Manager. She has been the Costume Shop Manager and an Instructor at NMSU since 2017 and is the proud recipient of the Fall 2021 "A" Mountain Staff Award and the Spring 2022 College of Arts and Sciences Exempt Staff Development Award.

Nichole Hamilton (she/hers) is an Assistant Professor of Theatre Arts at NMSU, teaching classes in vocal production and acting. At NMSU, she has directed *It's a Wonderful Life: A Live Radio Play*, *Inspecting Carol*, *The Wolves*, the 2020 original and interactive virtual play *Tracer*, and last year's production of *Fefu and her Friends*. Nichole has been an actor, director, and instructor for over 20 years and is a proud member of Actors Equity Association and the Hippodrome Acting Company. She is a certified teacher with the National Michael Chekhov Association and a practitioner with the Lessac Training and Research Institute. Nichole is the recipient of the NMSU 2020 Patricia Christmore Faculty Teaching Award.

David L. Hereford received his B.F.A. in Theatre from UNM in 1978. He spent five summers at the Santa Fe Opera and a summer in the props shop at the Oregon Shakespeare Festival in Ashland, Oregon, as well as being the Props Master at the Manitoba Theatre Centre in Winnipeg, and a scenic carpenter at the Denver Center Theatre Company.

RESIDENT COMPANY BIOGRAPHIES

Lisa Hermanson is originally from Seattle, Washington. She holds her MFA in Theatre Pedagogy/Performance from Virginia Commonwealth University, where she was also adjunct faculty in Theatre and Speech, and her BA in Theatre and Music from Seattle Pacific University. Lisa is a music director, director, pianist, vocalist, and composer/playwright. She has worked in theatres in both the Seattle and Richmond areas, including Virginia Repertory Theatre (Richmond, VA) and the 5th Avenue Theatre (Seattle, WA), as well as multiple years in theatre education in Seattle. Favorite music credits include *Into The Woods* (TheatreVCU), *Spitfire Grill* (Northwest University), *The Little Mermaid* (Broadway Bound Children's Theatre), several years with Covenant Kids (Shoreline Covenant Church), and work on the revival of *Paint Your Wagon* (5th Avenue Theatre). Favorite directing credits include *Little Shop of Horrors* (TheatreVCU), *12 Angry Jurors* (Meadowdale High School), *The Good Doctor* (Seattle Pacific University), and *Robin Hood* (Shoreline Christian School). In addition to working with published and classic pieces, Lisa also focuses on new work. Her current project is a musical on the question of immigration, the first draft of which was developed and workshopped in Richmond, VA as a culmination of her graduate work.

Wil Kilroy joined NMSU after many years in Maine where he was Chair and Professor of Theatre at the University of Southern Maine. At USM he directed dozens of plays and musicals including *A Midsummer Night's Dream* and *The Laramie Project* which were invited to Kennedy Center regional festivals. Wil has worked nationally as an actor, with roles ranging from Steve in *Becky's New Car* to Laertes in *Hamlet*, and on TV productions such as *All My Children* and *Babylon Five*, and is an annual alumni guest artist with The State Ballet of Rhode Island. As the co-founder of the National Michael Chekhov Association, Wil has taught nationally and internationally. Wil was awarded the Kennedy Center bronze medallion for achievement in Theatre Education in 2014.

RESIDENT COMPANY BIOGRAPHIES

Larissa Lury is an associate professor, director, deviser, and a former acrobat. She drawn to artwork and experiences that open her to new ways of looking at the world around her, and strives to create those experiences for others. She's directed and workshoped plays for companies including: American Shakespeare Center, The Assembly, Cherry Lane (Mentor Project), The Playwrights' Center, Urbanite, Dorset Theatre Festival, Portland Center Stage, Southern Rep, San Diego Rep, InterAct, Ensemble Studio Theatre, Clubbed Thumb, New Georges, Ma-Yi, New Jersey Rep, Keen Company's Keen Teens, McCarter Theatre's Youth Ink!, Curious Theatre Company, Lake Dillon, Passage Theatre, Abingdon/ Small Pond, Leviathan Lab, Prospect Theatre and of course, American Southwest Theatre Company. She was recently awarded a Next Stage Residency with The Drama League in NYC. She was a member of the inaugural group of National Directing Fellows, an LMCC Process Space Resident, a Resident Director at Ensemble Studio Theatre, and a chashama AREA Award recipient. She is a member of the Lincoln Center Theater Directors Lab, and a New Georges Affiliate Artist. She received a BS from Northwestern University and an MFA from UC San Diego.

Jim Wilkinson is a graduate of Oñate high school in Las Cruces New Mexico where he studied technical theater. He continued his education at Full Sail University in Orlando Florida where he received an associates of science in show production and touring. He returned to New Mexico to become the head of the audio department at the Spencer Theater in Alto, NM. He travelled the U.S. and Canada on tours of Broadway shows including; *Oklahoma*, *Big River*, *My Fair Lady* and *Movin' Out*. In 2007 he moved to New York City and worked as a sound operator and mixer on many Broadway productions including *Hair*, *Spamalot*, *Porgy And Bess*, *A Christmas Story*, *Spiderman: Turn Off the Dark*, and *If/Then*. Jim is thrilled to be back living in the southwest and to be part of the NMSU Theatre Department. He would like to thank his wife, Jackie for her continued support.

Michael Wise received his B.A. in Theatre from UC Santa Barbara and has been working professionally in theatre for over four decades. He has worked for the Oregon Shakespeare Festival, The Bathhouse Theatre Company, A Contemporary Theatre in Seattle, Intiman Theatre, Cincinnati Playhouse in the Park, The Seattle Group Theatre, The Empty Space Theatre, Mt. Hood Repertory Theater, The Player's Guild in Canton, Ohio, New City Theater, Southern California Conservatory Theater, and Seattle Childrens Theatre. He recently directed *Matilda, the Musical* for LCCT.

SPONSORS and DONORS

DIRECTORS CIRCLE

Center Stage Society

William & Julia Brogan, Connie Hines
Beth Pollack, Heather Pollard,
In Memory of Colonel Joseph W. Pollard
and Denise Welsh

Marquee Club

Curtis Blaise, LA Buckman, Mike Cook, Wil
Kilroy, Richard Radick & Margaret Suzukida,
Norman Todd

SPONSORS and DONORS

Impresario (\$3,500+)

Spotlight (\$499 - \$250)

Gary & Karen Bartholomew

Headliner(\$3,499 - \$2,000)

Charles H. Harper

Caryl Kotulak

Show Stoppers

Heather and Warren Pollard

(\$1,999 - \$1,000)

Dr. William & Deborah Storm

Karen & Tom Warren

Denise Welsh

Ovation (\$999 - \$500)

Leading Players (\$249 - 1)

Julia and William Brogan

Phillip Born

Van & Colette Bullock

Wil Kilroy

Caryl Kotulak

Rorie and Edward Measure

Heather Pollard

Ruth Mudge

Barb and Irv Ross

From the ASTC Board President

Welcome to *Hookman*, our first play for 2023! This performance is directed by our very own Larissa Lury and assistant directed by Eva Cullen. “Somehow, playwright Lauren Yee adeptly manages to get us to face some of our biggest fears, and some of the ways we are most capable of hurting ourselves and each other, while she makes us laugh, deliciously afraid, and fully entertained,” Lury said.



The American Southwest Theatre Company is proud to have provided funds to help cover the costs to bring *Hookman* scenic designer, Hsi-An Chen, to Las Cruces and work with our students. ASTC also allocated funds to cover the composition of original music for this performance.

The ability to provide these funds is only possible through fund raising events and generous donations by patrons like you. Please consider donating to ASTC to enable us to continue to finance the cost of bringing guest artists to work directly with our students, and enriching their theatrical education. ASTC offers funds to enable our students to travel to conferences, festivals, and auditions, therefore enhancing their experiences.

Mark your calendar for our final play of the 2022-23 season, a musical, *Godspell*, April 28th-May 7th. Directed by Wil Kilroy and musical direction by Lisa Hermanson.

Please visit our web site to learn more about the NMSU Theatre program and The American Southwest Theatre Company. www.theatre.nmsu.edu

Please feel free to contact me via email, dwelsh@nmsu.edu with any questions, comments, or fund raising ideas! Thank you.

Denise Welsh,
ASTC Board President

ASTC Board of Directors

President:
Denise Welsh

Vice President:
Scott Brocato

Secretary:
Julia Brogan

Managing Director/
Treasurer: Wil Kilroy

Teresa Burgin, Mike Cook,
Esther Devall, Matthew Gurule, Wil Kilroy,
Beth Pollack, Barbara Elliot Ross, Irv Ross,
Teddy Aspen Sanchez, Carolyn Williams

ASTC RESIDENT COMPANY / NMSU THEATRE ARTS FACULTY / STAFF

Wil Kilroy	<i>Professor/Department Head/Managing Director</i>
Chloe Cappuccilli	<i>Visiting Assistant Professor</i>
Tamara M. Carruthers	<i>Costume Shop Manager</i>
Nichole Hamilton	<i>Assistant Professor</i>
David L. Hereford	<i>Interim Technical Director</i>
Lisa Hermanson	<i>Assistant Professor</i>
Larissa Lury	<i>Associate Professor</i>
Jim Wilkinson	<i>Theater Manager/Sound Designer</i>
Michael Wise	<i>Production Stage Manager</i>
Melis Derya White	<i>Administrative & Fiscal Assistant</i>

THEATRE ARTS SCHOLARSHIPS

Thomas A. Erhard
Scholarship

Sutherland-McManus
Scholarship

Sharon Beth Kallick
Memorial Scholarship

Theatre Arts Endowed
Scholarship

Mark and Stephanie
Medoff Endowed
Scholarship

Caroline L. and Frederic
C. Thompson Endowed
Scholarship

Kimberly Ming Theatre
Arts Scholarship

Eve Yoquelet Scholarship
for Theater Arts

Department of Theatre Arts Scholarship

SCHOLARSHIP RECIPIENTS

Sydney Arnink

Nicholas Mayeux

Alia Belinte

Shawn Pirkle

Vance Cook

Benjamin Ramsey

Cyprian Fira

Esther Rogge

JJ Hanley

Caitlin N. Skibyak

Darcy Harman

Chantel Turner

Joshua Jackson

Elia Vasquez

Yasmine Jahangiri

Camren Vugteveen

Dana Kennedy

Peyton Womble



*The Kennedy Center American College Theater Festival, part of the Rubenstein Arts Access Program, is generously funded by **David M. Rubenstein.***

Special thanks to The Harold and Mimi Steinberg Charitable Trust for supporting the John F. Kennedy Center for the Performing Arts' Kennedy Center American College Theater Festival.

Additional support is provided by The Honorable Stuart Bernstein and Wilma E. Bernstein; and the Dr. Gerald and Paula McNichols Foundation.

Kennedy Center education and related artistic programming is made possible through the generosity of the National Committee for the Performing Arts.

This production is entered in the Kennedy Center American College Theater Festival (KCACTF). The aims of this national theater education program are to identify and promote quality in college-level theater production. To this end, each production entered is eligible for a response by a regional KCACTF representative, and selected students and faculty are invited to participate in KCACTF programs involving scholarships, internships, grants and awards for actors, directors, dramaturgs, playwrights, designers, stage managers and critics at both the regional and national levels.

Productions entered on the Participating level are eligible for invitation to the KCACTF regional festival and may also be considered for national awards recognizing outstanding achievement in production, design, direction and performance.

Last year more than 1,500 productions were entered in the KCACTF involving more than 200,000 students nationwide. By entering this production, our theater department is sharing in the KCACTF goals to recognize, reward, and celebrate the exemplary work produced in college and university theaters across the nation.