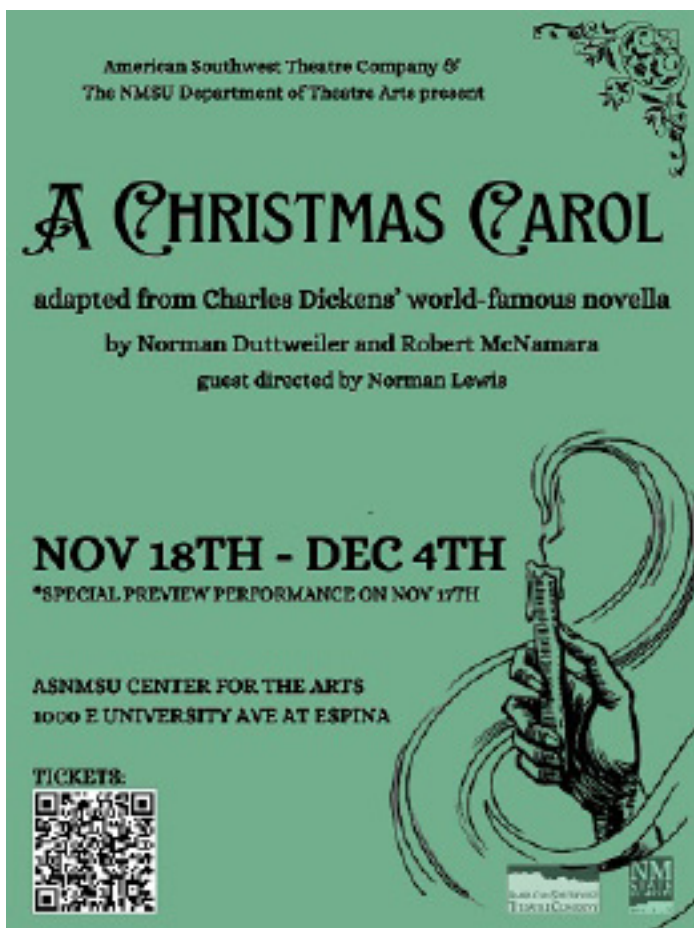




American Southwest Theatre Company
at NMSU Theatre Arts
presents



Director
Music Director
Choreographer
Scenic Coordinator
Costume Designer
Lighting Designer
Projection Designer
Props Designer
Sound Designer
Stage Manager

Norman Lewis
Lisa Hermanson
Josey Pickett
Norman Lewis
Chloe Cappuccilli
Omar Ramos
Norman Lewis
Chloe Cappuccilli
Jim Wilkinson
Mike Wise

CAST

Sydney Arnink . . . Mrs. Cratchit and Ensemble

Arrow Bever . . . Tiny Tim (Green Cast)

Charlie Bever . . . Fan and Ensemble

Jamin Bever . . . Tim the Fiddler

Penny Bever . . . Sarah Cratchit and Ensemble

Vance Cook . . . Bob Cratchit and Ensemble

Camille Gallus . . . Charwoman and Ensemble

Raemus Gallus . . . Tiny Tim (Red Cast)

Emma Kenney . . . Ghost of Christmas Future and Ensemble

Randy Koonse . . . Scrooge

Elianna Lopez-Sanchez . . . Ghost of Christmas Past and Ensemble

Ryan Mixon . . . Topper and Ensemble

Jessie Ortega . . . Mrs. Fezziwig and Ensemble

Benjamin Ramsey . . . Young Scrooge and Ensemble

Angelique Reagan . . . Belle and Ensemble

Austin Reeve . . . Fred and Ensemble

Camren Vugteveen . . . Ghost of Christmas Present and Ensemble

Dustin Wright . . . Ghost of Jacob Marley and Ensemble

TIME -- The 1840's

PLACE -- London

This production is dedicated to the late
Charles "Chuck" Bisbee,
a long time supporter of the
American Southwest Theatre Company

Audiences are reminded to please silence all electronic
devices (cell phones and alarms) prior to the performance.

Thank you for your consideration.

CAST BIOGRAPHIES

Sydney Arnink (Mrs. Cratchit and Ensemble)

Sydney is a freshman at NMSU. Originally from Albuquerque New Mexico, Sydney has done mostly musical theatre. She has performed in shows like *Willy Wonka* as Mrs. Gloop, *Alice in Wonderland* as the dodo bird, *A Star Wars Christmas* as Queen Amidala and many more. Sydney is so excited to be able to tell this beautiful story and is thankful for all the support from family and friends!

Arrow Bever (Tiny Tim; Green Cast)

Arrow Bever is 6 years old and loves being outside, playing with their siblings, music, and theater. Arrow has been in several plays including *The Legend of Sleepy Hollow*, *A Suessified Christmas Carol*, *The Frog Prince*, and *Frozen Jr.* Arrow is very excited to play Tiny Tim!

Charlie Bever (Fan and Ensemble)

Charlie is a 7th grade homeschooler. She has been involved in theatre from a very young age and has been in many productions including *Radium Girls* (as a stage hand), *Frozen Jr.* (as Anna), *Sleeping Beauty* (as Sleeping Beauty), *The Ugly Duckling* (as Ugly) and many other childrens plays and musicals. Charlie enjoys acting with her siblings and baking yummy food.

Jamin Bever (Tim the Fiddler)

Jamin Bever is 16 years old and enjoys music, roller skating, and his chickens. He can often be found throughout Las Cruces busking with his siblings. He has been in many other theatre productions, including *Frozen Jr.* and *Phantom Tollbooth*, but this is his first one playing his fiddle. He is very excited to be a part of *A Christmas Carol*!

Penny Bever (Sarah Cratchit and Ensemble)

Penny Bever is a homeschooled 9th grader. Her favorite roles that she has played so far, include Alice in *Alice in Wonderland*, Kathryn in *Radium Girls* and Castle Frog in *The Frog Prince*. She is very excited to be a part of her first production with NMSU!

Vance Cook (Bob Cratchit and Ensemble)

Vance Cook is a sophomore and Theatre Major at NMSU and is excited to perform again. Some of his recent credits include: Clyde in Limelight Theatre's *Bonnie and Clyde*, Set Design for Blank Conversations' *Meteor Shower*, and Property Design for Ember Theatre's *Yellow Wallpaper*. Vance would like to thank his partner for support and wants to shout out his father for being a hero in his heart. Lastly, he wishes you a Merry Christmas and a Happy Holiday Season.

CAST BIOGRAPHIES

Camille Gallus (Charwoman and Ensemble)

Camille has been acting since she was five and she loves the theater. She also loves to write poetry. She is a mother to beautiful boy Reamus. She always had a passion for acting, and thinks it is amazing to live a thousand lifetimes in acting. She loves sunflowers and galaxies. She is twenty-eight and graduated in 2021 with a bachelors degree in counseling. She loves to help people.

Raemus Gallus (Tiny Tim (Red Cast)

Reamus is six and about to be turn seven. This is his first musical. He loves goo jitzu, dinosaurs and Batman. He is a very happy and loving joyful ball of energy. Like his mother he loves to help people.

Emma Kenney (Ghost of Christmas Future and Ensemble)

Emma is a junior at New Mexico State, but this will be her first performance with NMSU. She has been doing community theatre since she was a kid, and that continued through high school up until now. Several of her previous productions include The Wicked Witch of the West in *The Wizard of Oz*, Ronette in *Little Shop of Horrors*, and Mercutio in *Romeo and Juliet*. Emma is so glad to be a part of this production and hopefully many other NMSU productions to come!

Randy Koonse (Scrooge)

Randy Koonse is new to Las Cruces and NMSU. Randy taught ESL in Seoul, Korea for 25 years and was a member of the Yongsan Players under the direction of Larry Chandler. Randy's credits include *Greater Tuna*, *Seven Year Itch*, *My Fair Lady*, and *Arsenic and Old Lace*. Randy thanks Dance teachers Ana Sanchez (Jazz and Tap) and George Torres (Ballroom); and Acting teacher Monika Mojica for their enthusiastic support; and his NMSU classmates for their kind acceptance.

Elianna Lopez-Sanchez (Ghost of Christmas Past and Ensemble)

Elianna is a freshman in here at NMSU in the Arts and Science Department. This will be her first performance after loving theater her whole life. Elianna is extremely excited to be working on and off stage with her new found family. The veterans in this cast have helped her every second and she is proud to be one of the newest members of the NMSU theater family.

Ryan Mixon (Topper and Ensemble)

Ryan is a freshman to NMSU theater he's originally from California and this will be his first performance. Ryan is extremely excited to be working on his first performance and can't wait to see what happens. In his free time he likes to play baseball, Cornhole, and the guitar. He's excited to be working with NMSU theater for the rest of his education at NMSU.

CAST BIOGRAPHIES

Jessie Ortega (Mrs. Fezziwig and Ensemble)

Jessie graduated from NMSU with her bachelor's in accounting in 2018 and her master's in information systems in 2021. Jessie has acted in numerous shows at LCCT including *An Enemy of the People*, *Legally Blonde*, and *Mary Poppins*. She is excited to be doing her first show at NMSU and wants to thank her fiancé for her endless encouragement and support.

Benjamin Ramsey (Young Scrooge and Ensemble)

Benjamin is a junior at NMSU, studying History and Theatre Arts as a double major. This is the third production that he has performed, his others include *The Thanksgiving Play* and *Broadway on Stage*. He is very excited to perform in *A Christmas Carol*, it is one of his favorite stories. He is honored to work with such an amazing cast and crew, and hopes the audience enjoys the show as much as he does!

Angelique Reagan (Belle and Ensemble)

Angelique is a transfer student in her third year, this being her first year at NMSU in the Theatre Department. She's done previous performances and shows in high school at NMSA like *Fiddler on the Roof*, and *Princess and the Pea*. She's excited to get back into the theatre community and praises God for all of these opportunities!

Austin Reeve (Fred and Ensemble)

Austin is a Theatre Major at NMSU who first started with his role as Gollum in his high school's production of *The Hobbit*. He would then go on to win awards for Best Supporting Actor, Best Actor, and upon directing *Boy Meets Girl: A Young Love Story* the award for Best Comedic Timing. This is his first NMSU main stage production and he is very excited to be performing once more, and to continue performing in the future.

Camren Vugteveen (Ghost of Christmas Present and Ensemble)

This is Camren's first show at NMSU, and he is thankful for being welcomed into such a friendly program. He would like to wish everyone a Happy Holiday season and hopes that you enjoy the show!

Dustin Wright (Ghost of Jacob Marley and Ensemble)

Dustin is thrilled to be making his Las Cruces stage debut in this production of *A Christmas Carol*. While earning his B.S. Ed in Theater Education at Northern Arizona University, Dustin performed in numerous shows. Most notably he played Bottom in *A Midsummer Night's Dream* and Professor Henry Harper in *Another Antigone*, for which he was nominated as Best Actor at the American College Theater Festival. He wishes to thank his family and friends for their love and support.

FROM THE INTERIM DEPARTMENT HEAD- AND MANAGING DIRECTOR

Welcome to NMSU's Department of Theatre Arts and this brand new adaptation of Charles Dickens' *A Christmas Carol*! When I think about why so many people love to hear this almost 180-year-old story told again and again, I can't help but consider how much we all long for second chances, and how much we need to believe that we are capable of change, worthy of redemption, and that at the core of humanity is goodness.



It's a Christmas story, but no matter your beliefs, it offers reasons to be hopeful, imagining that even the most selfish and shut-off among us might find the spirit of care for others and capacity for love and joy.

If you have been coming to see shows here for years, welcome back. If this is your first time at NMSU Theatre Arts, we are so happy to have you here, and hope this becomes a "home" away from home for you.

As you probably already know (since you're sitting here), theatres can be special places. They are rare spaces where we all gather together to laugh, cry, and think, where we can dig into some of the toughest questions about what it means to be human, where we can grapple with current challenges, or where we can escape for an hour or two from whatever we're facing in our everyday lives. Here at NMSU, we try to put together seasons of plays and musicals that allow us to do all of that.

We hope in this season you see yourself represented in the characters on our stage, and we also hope you get to know characters who are very different from you.

After the distance between people created by the events of the past few years, we want this theatre to be a place for us to reconnect. We invite you to join us after the shows for our receptions and talkbacks, so that the connections can continue after the performance.

We'd like to thank American Southwest Theatre Company and the College of Arts and Sciences for helping to support our students with scholarships and travel funds, and for enabling our department to bring in guest artists like the director, lighting designer and choreographer for this production.

Hope to see you back here for all of the very different experiences our season has in store, including *Hookman* by Lauren Yee, and musical *Godspell* by Stephen Schwartz. To learn about the plays, musicals, and events in our 2022-23 season, please visit theatre.nmsu.edu.

Wishing you joy in this season of giving. Thank you for celebrating it with us!

With excitement,

Larissa Lury - Interim Department Head

About the play

A Note on Charles Dickens and *A Christmas Carol in Prose being a Ghost Story of Christmas*.

"Marley was dead, to begin with." With those six words, Charles Dickens invites us into the world of *A Christmas Carol*, indelibly introducing us to Ebenezer Scrooge, the three ghosts of Christmas, Tiny Tim, and a full cast of memorable characters.

For Anglophones, Christmas would not be Christmas without *A Christmas Carol*. Indeed, the many scenes of Christmas festivities that adorn *A Christmas Carol*, described in joyful detail by Dickens, have become the established Christmas traditions that are in practice today. The term "Scrooge," the world's most miserable miser, and his expression on all things holiday, "Bah, Humbug!" are so entrenched in our collective unconscious that they have been listed in the Oxford English dictionary.

Dickens, 31 years old and already a considerable international literary figure, wrote this tale of redemption in six weeks, beginning in October 1843. *A Christmas Carol* was first published on December 19, 1843, with the first edition sold out by Christmas Eve. By 1844, the novella had gone through 13 printings and continues to be a robust seller to this day.

Although the Christmas joy that Dickens describes so well is what has kept the story so popular, there is a darker side to this tale which is the real reason Dickens wrote it. Dickens's father had gone to a debtors' prison and Dickens toiled as a laborer in a blacksmith factory during his adolescence; reforming the institutions that penalized the poor had always been of paramount importance to Dickens. What Dickens was exposing in the darker moments of *A Christmas Carol* were the consequences of England rushing into the Industrial Age: people were leaving the countryside and flooding the cities providing cheap labor, transforming England into an industrial powerhouse. Cheap labor was needed, and the cheapest labor came from children. Entire families worked 12-hour days just earn enough for the most basic necessities. What makes Christmas at the Cratchits so memorable for them is the contrast to the dreary lives they live on almost every other day of the year. The wealth gap and its consequences for the poor is not a new phenomenon, and writers like Dickens were already shining a light on it more than 175 years ago.

Though he spent mere weeks writing it, Dickens' novella about the original Christmas grinch has been a holiday staple for nearly two centuries, giving rise to countless adaptations for stage and screen. The Internet Movie Database lists more than 100 versions of *A Christmas Carol*, more than 20 TV shows that have used Dickens' classic as fodder for episodes, there are at least two ballet and four opera versions, and hundreds of stage versions. *A Christmas Carol* is an entertainment phenomenon that continues in the 21st century and is showing no signs of slowing down.

GUEST ARTIST BIOGRAPHY

Norman Lewis (Director, Scenic Coordinator & Projection Designer)

Norman Lewis is a native of Buffalo, NY, graduated from Fordham University in New York City and has since enjoyed a 50-year career in the professional theatre as an actor, director, stage manager, and producer. Starting with an award-winning appearance as an actor at the Kennedy Center in Washington DC as a part of the American College Theatre Festival in 1973, he has subsequently appeared on Broadway as well as stock and regional productions with such stars as Lana Turner, Arlene Dahl, George Chakiris, Kim Hunter, and Loretta Swit. Appearing with the Theatre Guild's Theatre at Sea program, he has shared the stage with Zoe Caldwell, Jean Stapleton, Claire Bloom, Patricia Neal, Anne Jackson, Eli Wallach, Patrice Munsel, Donna McKechnie, George Grizzard, Jerry Orbach, Rue McClanahan, Ed Asner, Shirley Jones, Dick Cavett, and many others. He received rave notices from the New York Post for his only film appearance as Jackie Manchester in the Richard Benner film *Too Outrageous*, and even appeared in the buff on Broadway in the long running revival of *Oh! Calcutta!*

He took a hiatus from the theatre in the 1980's during which he acquired an MBA in Computer Applications and Information Systems from the Stern School of Business at NYU and a Wall Street career at the American Express Company before he assumed the position of Director of Information Systems for one of the top tier Wall Street law firms, Fried, Frank, Harris, Shriver & Jacobson.

In 1992 he purchased the oldest professional summer theatre in New York State, the Forestburgh Playhouse, located in the verdant Catskill Mountains approximately 100 miles from New York City. He then spent the next 22 years producing over 200 Equity summer productions and expanded the summer season to include children's theatre, educational theatre, and musical cabarets. In 2014, he retired from the Forestburgh Playhouse and now lives in Las Cruces, NM where he serves on the board of the Las Cruces Community Theatre.

With his late husband Ron Nash, he co-produced Emmy winners Ed Asner and Loretta Swit appearing as *FDR and Eleanor Roosevelt* in a benefit performance raising over \$25,000 for the NMSU theatre department scholarship fund in 2014. In a benefit he co-produced for the Las Cruces Community Theatre, he appeared as Hollywood icon Bette Davis opposite Loretta Swit in *Me & Jezebel*.

Since retiring to Las Cruces, he has appeared locally in *Our Town* (American Southwest Theatre Company), *Company*, *The Wizard of Oz*, *Annie* and *The Laramie Project* (Las Cruces Community Theatre), *The Hollow* (El Paso Playhouse), *The Explorers Club* and *Agamemnon* (No Strings Theatre Company) and *Anything Goes*, *Hello Dolly!*, and *Titanic* (UTEP Dinner Theatre). At the Las Cruces Community Theatre he has directed *No Sex Please, We're British*, Arthur Miller's *The Crucible*, and *The Little Dog Laughed*. He currently lives in Mesilla with his husband, Phillip Born.

Production Biographies

Omar Ramos (Guest Lighting Design)

Omar is proud to make his ASTC/NMSU Theatre debut. He received his Master of Fine Arts degree in Theatre Design with a dual focus in lighting and sound from the University of California, San Diego. His design and associate design credits from across the U.S. include the Goodman Theatre and Chicago Shakespeare Theater (Chicago), McCarter Theatre Center (Princeton, NJ), Oregon Shakespeare Festival (Ashland), and San Diego Repertory Theatre. He is invested in theatre that outreaches to children, veterans, survivors of domestic abuse, and their families. He also gravitates to work that sheds light on the politics of race and serves LGBT+ communities. More information about his work can be found at <https://www.omarramosdesign.com> Kindness. Generosity. Compassion.

Casey Standridge (Assistant Stage Manager)

Casey is a junior here at NMSU, but this is her first production working with the department. Casey first started doing theater when she was in 7th grade and has been involved in shows such as *Oliver Twist*, *Frankenstein: A new Musical*, *The Little Mermaid*, and *Newsies*. Casey is excited to see her first production come to life on stage and can't wait to work on *Hookman* next year.

SPECIAL THANKS TO

Phillip Born and Robert McNamara

This Spring at ASTC at NMSU

Hookman

by Lauren Yee

February & March, 2023

Godspell

(2012 Revised Version)

Music & Lyrics by
Stephen Schwartz
April & May, 2023

PRODUCTION STAFF

Theatre Manager	Jim Wilkinson
Interim Technical Director	Dave Hereford
Production Stage Manager	Mike Wise
Costume Shop Manager	Tamara M. Carruthers
Master Electrician	Jim Wilkinson
Assistant Stage Manager	Casey Standridge
Light Board Operator	Gus Sanchez
Sound Board Operator	Chung Seka
Booth Crew	Elia Vasquez
Follow Spot Operators	Eva Cullen, David Guerra, Autumn Ivy
Stage Crew	Jonathan Cordova, Andrea Florez, Shawn Pirkle, Dominick Zimmemann
Set Construction	THTR 141L & THTR 346 students
Costume Construction	Anabelle Fortin, THEA 1310L, and THEA 345 students
Wardrobe Supervisor	Mattie Ruminer
Costume Shop Assistant	Mattie Ruminer
Costume Crew	Alia Belinte, Eliza Philips, Peyton Womble, Emma Zavala, & Amy Trejo
Child Guardians	Jeffrey Gorbett, Melissa Wooldridge
House Manager	Indira Rucker
House Crew	Isaac Goldstein, Adan Hernandez, Alycia Herrera, Arieth Lopez, Athena McPeake, Kayla Peregrina, Lauren Valdez
Photographers	Mike Wise and Eva Cullen

RESIDENT COMPANY BIOGRAPHIES

Chloe Cappuccilli is a new Visiting Assistant Professor at NMSU working as a costume designer. She received her B.F.A from Columbia College Chicago in 2015 and her M.F.A from West Virginia University in 2020. She has worked as a costume and puppet designer, as well as costume crafts artisan and draper. Costume design credits include: *The Phantom Tollbooth*, *Naga Mandala* (West Virginia University) *Half Life of Memory* (Cold Basement Dramatics) *Moon shot*, *The American Revolution* (Theatre Unspeakable) *The Tempest*, *True West*, *Human Rites* (Columbia College Chicago).

Tamara M. Carruthers received a Bachelor of Arts in Theatre Arts from New Mexico State University. She managed NMSU's Costume Shop for three semesters directly after graduation. She then joined Wayside Theatre (Middletown, VA) and spent ten years as their Resident Costume Designer and Shop Manager. She spent five summers in the Costume Shop at Creede Repertory Theatre (Creede, CO) designing and serving as their Draper, Draper/First Hand, Assistant Costume Shop Manager, and Costume Shop Manager. She has been the Costume Shop Manager and an Instructor at NMSU since 2017 and is the proud recipient of the Fall 2021 "A" Mountain Staff Award and the Spring 2022 College of Arts and Sciences Exempt Staff Development Award.

Nichole Hamilton (she/hers) is an Assistant Professor of Theatre Arts at NMSU, teaching classes in vocal production and acting. At NMSU, she has directed *It's a Wonderful Life: A Live Radio Play*, *Inspecting Carol*, *The Wolves*, the 2020 original and interactive virtual play *Tracer*, and last year's production of *Fefu and her Friends*. Nichole has been an actor, director, and instructor for over 20 years and is a proud member of Actors Equity Association and the Hippodrome Acting Company. She is a certified teacher with the National Michael Chekhov Association and a practitioner with the Lessac Training and Research Institute. Nichole is the recipient of the NMSU 2020 Patricia Christmore Faculty Teaching Award.

David L. Hereford received his B.F.A. in Theatre from UNM in 1978. He spent five summers at the Santa Fe Opera and a summer in the props shop at the Oregon Shakespeare Festival in Ashland, Oregon, as well as being the Props Master at the Manitoba Theatre Centre in Winnipeg, and a scenic carpenter at the Denver Center Theatre Company.

RESIDENT COMPANY BIOGRAPHIES

Lisa Hermanson is originally from Seattle, Washington. She holds her MFA in Theatre Pedagogy/Performance from Virginia Commonwealth University, where she was also adjunct faculty in Theatre and Speech, and her BA in Theatre and Music from Seattle Pacific University. Lisa is a music director, director, pianist, vocalist, and composer/playwright. She has worked in theatres in both the Seattle and Richmond areas, including Virginia Repertory Theatre (Richmond, VA) and the 5th Avenue Theatre (Seattle, WA), as well as multiple years in theatre education in Seattle. Favorite music credits include *Into The Woods* (TheatreVCU), *Spitfire Grill* (Northwest University), *The Little Mermaid* (Broadway Bound Children's Theatre), several years with Covenant Kids (Shoreline Covenant Church), and work on the revival of *Paint Your Wagon* (5th Avenue Theatre). Favorite directing credits include *Little Shop of Horrors* (TheatreVCU), *12 Angry Jurors* (Meadowdale High School), *The Good Doctor* (Seattle Pacific University), and *Robin Hood* (Shoreline Christian School). In addition to working with published and classic pieces, Lisa also focuses on new work. Her current project is a musical on the question of immigration, the first draft of which was developed and workshopped in Richmond, VA as a culmination of her graduate work.

Wil Kilroy joined NMSU after many years in Maine where he was Chair and Professor of Theatre at the University of Southern Maine. At USM he directed dozens of plays and musicals including *A Midsummer Night's Dream* and *The Laramie Project* which were invited to Kennedy Center regional festivals. Wil has worked nationally as an actor, with roles ranging from Steve in *Becky's New Car* to Laertes in *Hamlet*, and on TV productions such as *All My Children* and *Babylon Five*, and is an annual alumni guest artist with The State Ballet of Rhode Island. As the co-founder of the National Michael Chekhov Association, Wil has taught nationally and internationally. Wil was awarded the Kennedy Center bronze medallion for achievement in Theatre Education in 2014.

RESIDENT COMPANY BIOGRAPHIES

Larissa Lury is an associate professor, director, deviser, and a former acrobat. She drawn to artwork and experiences that open her to new ways of looking at the world around her, and strives to create those experiences for others. She's directed and workshoped plays for companies including: American Shakespeare Center, The Assembly, Cherry Lane (Mentor Project), The Playwrights' Center, Urbanite, Dorset Theatre Festival, Portland Center Stage, Southern Rep, San Diego Rep, InterAct, Ensemble Studio Theatre, Clubbed Thumb, New Georges, Ma-Yi, New Jersey Rep, Keen Company's Keen Teens, McCarter Theatre's Youth Ink!, Curious Theatre Company, Lake Dillon, Passage Theatre, Abingdon/ Small Pond, Leviathan Lab, Prospect Theatre and of course, American Southwest Theatre Company. She was recently awarded a Next Stage Residency with The Drama League in NYC. She was a member of the inaugural group of National Directing Fellows, an LMCC Process Space Resident, a Resident Director at Ensemble Studio Theatre, and a chashama AREA Award recipient. She is a member of the Lincoln Center Theater Directors Lab, and a New Georges Affiliate Artist. She received a BS from Northwestern University and an MFA from UC San Diego.

Jim Wilkinson is a graduate of Oñate high school in Las Cruces New Mexico where he studied technical theater. He continued his education at Full Sail University in Orlando Florida where he received an associates of science in show production and touring. He returned to New Mexico to become the head of the audio department at the Spencer Theater in Alto, NM. He travelled the U.S. and Canada on tours of Broadway shows including; *Oklahoma*, *Big River*, *My Fair Lady* and *Movin' Out*. In 2007 he moved to New York City and worked as a sound operator and mixer on many Broadway productions including *Hair*, *Spamalot*, *Porgy And Bess*, *A Christmas Story*, *Spiderman: Turn Off the Dark*, and *If/Then*. Jim is thrilled to be back living in the southwest and to be part of the NMSU Theatre Department. He would like to thank his wife, Jackie for her continued support.

Michael Wise received his B.A. in Theatre from UC Santa Barbara and has been working professionally in theatre for over four decades. He has worked for the Oregon Shakespeare Festival, The Bathhouse Theatre Company, A Contemporary Theatre in Seattle, Laguna Independent Arts Repertory, Intiman Theatre, Cincinnati Playhouse in the Park, The Seattle Group Theatre, The Empty Space Theatre, Mt. Hood Repertory Theater, The Player's Guild in Canton, Ohio, New City Theater, Fargo Interarts Ballet, Southern California Conservatory Theater, and Seattle Childrens Theatre.

SPONSORS and DONORS

DIRECTORS CIRCLE

Center Stage Society

William & Julia Brogan, Connie Hines

Beth Pollack, Heather Pollard,

In Memory of Colonel Joseph W. Pollard
and Denise Welsh

Marquee Club

Curtis Blaise, LA Buckman, Mike Cook, Wil
Kilroy, Richard Radick & Margaret Suzukida,
Norman Todd

SPONSORS and DONORS

Impresario (\$3,500+)

Spotlight (\$499 - \$250)

Gary & Karen Bartholomew

Headliner(\$3,499 - \$2,000)

Charles H. Harper

Caryl Kotulak

Show Stoppers

Heather and Warren Pollard

(\$1,999 - \$1,000)

Dr. William & Deborah Storm

Karen & Tom Warren

Denise Welsh

Ovation (\$999 - \$500)

Leading Players (\$249 - 1)

Julia and William Brogan

Phillip Born

Van & Colette Bullock

Wil Kilroy

Caryl Kotulak

Rorie and Edward Measure

Heather Pollard

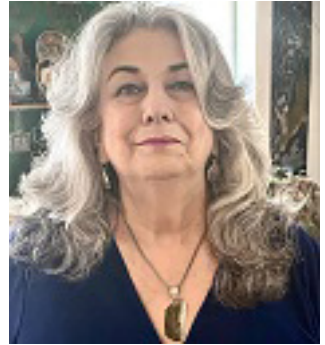
Ruth Mudge

Barb and Irv Ross

From the ASTC Board President

The American Southwest Theatre Company is extremely excited to offer this never seen before version of *A Christmas Carol*, whose cast is primarily current or recently graduated NMSU Theatre Students!

Norman Duttweiler, Cowriter and Director, provided the following description: This production of *A Christmas Carol*, adapted by Norman Duttweiler and Robert McNamara from



the original Dickens novella, takes a different approach to the beloved story than previous productions from the American Southwest Theatre Company. Using only the dialogue and narration directly from the novella, this version tries to stay true to the original feeling of the piece, setting the action firmly in mid-19th century London, without trying to update it or make it more contemporary. The company of 16 actors remain onstage at all times as the action of the play unfolds; with the exception of the actor playing Scrooge, they all play multiple roles as they bring more than 40 of Dickens' characters to life, often changing character and costume in front of the audience. Because so much of our own Yuletide celebrations revolve around traditional Christmas carols, sometimes dating to the 19th century, these songs are employed throughout the production to enhance the traditional holiday experience. Please help ASTC in its efforts to support NMSU Theatre students through donations and participation in fund raising events. ASTC provides travel funds assisting with transportation, housing, meals, and registration to enable our students to participate in theatrical competitions, emergency funds for academic assistance, and a \$1000 Grant for a graduating senior. ASTC also provides funds to cover stipends, transportation, food and lodging for a variety of guest artists to work with our students and provide insight and experience in all aspects of the professional world of acting, costuming, set design, lighting/sound and directing.

To ensure you are informed about future ASTC fund raising events please contact the Theatre Department 575-646-5122 and join our mailing list. Also check our web site <https://theatre.nmsu.edu/> . ASTC is planning to host an online auction through Mesilla Valley Estate Sales. Our target date is sometime February 2023. Please don't hesitate to contact me via email dwelsh@nmsu.edu

ASTC Board of Directors

President:
Denise Welsh

Vice President:
Scott Brocato

Secretary:
Julia Brogan

Interim Managing
Director/Treasurer:
Larissa Lury

Barbara Baumann, Teresa Burgin, Mike Cook,
Esther Devall, Matthew Gurule, Wil Kilroy,
Beth Pollack, Barbara Elliot Ross, Irv Ross,
Teddy Aspen Sanchez, Carolyn Williams

ASTC RESIDENT COMPANY / NMSU THEATRE ARTS FACULTY / STAFF

Wil Kilroy	<i>Professor/Department Head/Managing Director</i>
Chloe Cappuccilli	<i>Visiting Assistant Professor</i>
Tamara M. Carruthers	<i>Costume Shop Manager</i>
Nichole Hamilton	<i>Assistant Professor</i>
David L. Hereford	<i>Interim Technical Director</i>
Lisa Hermanson	<i>Assistant Professor</i>
Larissa Lury	<i>Associate Professor</i>
Jim Wilkinson	<i>Theater Manager/Sound Designer</i>
Michael Wise	<i>Production Stage Manager</i>
Melis Derya White	<i>Administrative & Fiscal Assistant</i>

THEATRE ARTS SCHOLARSHIPS

Thomas A. Erhard
Scholarship

Sutherland-McManus
Scholarship

Sharon Beth Kallick
Memorial Scholarship

Theatre Arts Endowed
Scholarship

Mark and Stephanie
Medoff Endowed
Scholarship

Caroline L. and Frederic
C. Thompson Endowed
Scholarship

Kimberly Ming Theatre
Arts Scholarship

Eve Yoquelet Scholarship
for Theater Arts

Department of Theatre Arts Scholarship

SCHOLARSHIP RECIPIENTS

Sydney Arnink

Nicholas Mayeux

Alia Belinte

Shawn Pirkle

Vance Cook

Benjamin Ramsey

Cyprian Fira

Esther Rogge

JJ Hanley

Caitlin N. Skibyak

Darcy Harman

Chantel Turner

Joshua Jackson

Elia Vasquez

Yasmine Jahangiri

Camren Vugteveen

Dana Kennedy

Peyton Womble



The Kennedy Center American College Theater Festival, part of the Rubenstein Arts Access Program, is generously funded by
David M. Rubenstein.

Special thanks to The Harold and Mimi Steinberg Charitable Trust for supporting the John F. Kennedy Center for the Performing Arts' Kennedy Center American College Theater Festival.

Additional support is provided by The Honorable Stuart Bernstein and Wilma E. Bernstein; and the Dr. Gerald and Paula McNichols Foundation.

Kennedy Center education and related artistic programming is made possible through the generosity of the National Committee for the Performing Arts.

This production is entered in the Kennedy Center American College Theater Festival (KCACTF). The aims of this national theater education program are to identify and promote quality in college-level theater production. To this end, each production entered is eligible for a response by a regional KCACTF representative, and selected students and faculty are invited to participate in KCACTF programs involving scholarships, internships, grants and awards for actors, directors, dramaturgs, playwrights, designers, stage managers and critics at both the regional and national levels.

Productions entered on the Participating level are eligible for invitation to the KCACTF regional festival and may also be considered for national awards recognizing outstanding achievement in production, design, direction and performance.

Last year more than 1,500 productions were entered in the KCACTF involving more than 200,000 students nationwide. By entering this production, our theater department is sharing in the KCACTF goals to recognize, reward, and celebrate the exemplary work produced in college and university theaters across the nation.